



PRODUCTS AND SERVICES CATALOGUE



Welcome

Who We Are

Cell-In is a biotechnology company specializing in molecular diagnostics, cytogenetics, and research solutions. We develop and manufacture **high-quality Real-Time PCR kits, FISH panels, and DNA/RNA extraction systems** for clinical laboratories, hospitals, universities, veterinary laboratories and veterinary research centers, and life science institutes.

Our expertise spans **molecular genetics, microbiology, cytogenetics, and advanced molecular biology applications with a strong and growing focus on veterinary diagnostics, supporting animal health, infectious disease detection, genetic screening, and livestock productivity.**

With a strong R&D focus, Cell-In provides innovative products, custom project development, laboratory setup services, bioinformatics analyses, and technical training.

Dedicated to accuracy, reliability, and scientific excellence, we support professionals in human and veterinary genetics, pathology, microbiology, and life science research worldwide.



1. Diagnosis and Clinical Research

- Molecular Genetics
- Molecular Microbiology
- Cytogenetics
- DNA/RNA Extraction

2. Research and Development

- Molecular Biology
- Protein Biology
- Bioinformatics Analyses
- Project Writing and Consulting
- Laboratory Establishment
- Applied Laboratory Applications
- Staff Training

Diagnosis and Clinical Research



Advantages

- High sensitivity
- High specificity
- Early Diagnosis
- Fast Results
- Low Cost
- Ready to Use

1. Diagnosis and Clinical Research

- **Molecular Genetics**
 - SMA(SMN1) Real Time PCR Kit
 - FMF Real Time hB frt Kit
 - Jak2 (V617F) Real Time hB frt Kit
 - AZOplex IV AZF Detection kit (14 STSs+SRY)
 - Ankylosing Spondylitis HLA-8*27 Real Time hD frt Kit
 - Sex Determination (SRY and Y-ch analysis)



AZOplex® IV AZF Detection Kit (14 STSs + SRY)

Place of Use

- Private genetic testing centers
- Hospitals and medical universities' genetics departments



AZOplex® IV AZF Detection Kit (14 STSs + SRY)

1. Diagnosis and Clinical Research

- Molecular Genetics
 - SMA(SMN1) Real Time PCR Kit
 - FMF Real Time hB frt Kit
 - Jak2 (V617F) Real Time hB frt Kit
 - AZOplex IV AZF Detection kit (14 STSs+SRY)
 - Ankylosing Spondylitis HLA-8*27 Real Time hD frt Kit
 - Sex Determination (SRY and Y-ch analysis)

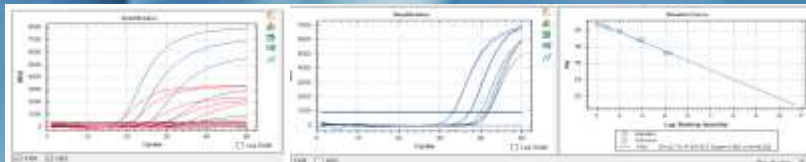
Advantages

- High sensitivity
- High specificity
- Early Diagnosis
- Fast Results
- Low Cost
- Ready to Use

2. Diagnosis and Clinical Research

• Molecular Microbiology (Infection Panel)

- Hepatitis B RT-PCR Quantitative/Qualitative Kit
- Hepatitis C RT-PCR Quantitative/Qualitative Kit
- HIV-1 RT-PCR Quantitative/Qualitative Kit
- Human Papillomavirus RT-PCR Kit
- MTB Rif RT-PCR kit
- MTB ÇİD RT-PCR kit
- Epstein Barr Virus RT-PCR kit
- Malaria RT-PCR Kit
- Malaria Species RT-PCR Kit
- Cytomegalovirus (CMV) Quantitative RT-PCR Kit
- Measles Virus RT-PCR Kit
- Yellow Fever Virus Quantitative RT-PCR Kit
- Helicobacter Pylori RT-PCR Kit
- Helicobacter Pylori – Clarithromycin Resistance RT-PCR Kit



HIV-1 RT-PCR Kantitatif kit

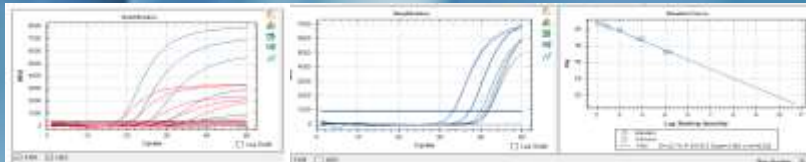
Place of Use

- Private genetic testing centers
- Medical microbiology departments in hospitals and medical universities.

2. Diagnosis and Clinical Research

• Molecular Microbiology (Infection Panel)

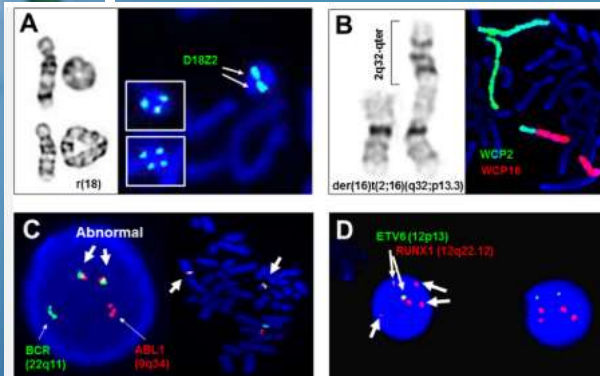
- Hepatitis B RT-PCR Quantitative/Qualitative Kit
- Hepatitis C RT-PCR Quantitative/Qualitative Kit
- HIV-1 RT-PCR Quantitative/Qualitative Kit
- Human Papillomavirus RT-PCR Kit
- MTB Rif RT-PCR kit
- MTB ÇİD RT-PCR kit
- Epstein Barr Virus RT-PCR kit
- Malaria RT-PCR Kit
- Malaria Species RT-PCR Kit
- Cytomegalovirus (CMV) Quantitative RT-PCR Kit
- Measles Virus RT-PCR Kit
- Yellow Fever Virus Quantitative RT-PCR Kit
- Helicobacter Pylori RT-PCR Kit
- Helicobacter Pylori – Clarithromycin Resistance RT-PCR Kit



HIV-1 RT-PCR Kantitatif kit

3. Diagnosis and Clinical Research

- Cytogenetics (Fluorescence in situ hybridization (FISH))



READY TO USE

EASY PROTOCOL

SPECIFIC COLOR COMBINATIONS

SPECIFIC PROBE COMBINATIONS

ÜRÜN VE HİZMETLERİMİZ

Place of Use

- Private genetic testing centers
- Medical genetics, medical pathology, and hematology departments in hospitals and medical universities.

3. Diagnosis and Clinical Research

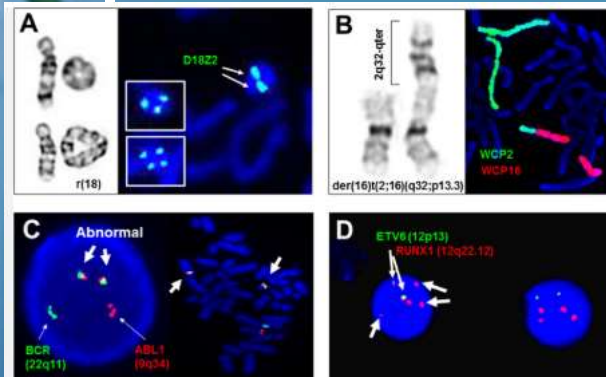
- Cytogenetics (Fluorescence in situ hybridization (FISH))

READY TO USE

EASY PROTOCOL

SPECIFIC COLOR COMBINATIONS

SPECIFIC PROBE COMBINATIONS



4. Diagnosis and Clinical Research

- Cytogenetics (Fluorescence in situ hybridization (FISH))
- Prime FISH – Hematologic Cancer Panel

17-001	primeFISH® del (13q14) (D13S25) / 13qter LS DC
17-001-A	primeFISH® del (13q14) (D13S319) / LAMP1 (13q34) / Sent 12 LS TC
17-001-B	primeFISH® del (13q14) (D13S319) / LAMP1 (13q34) LS DC
17-002	primeFISH® MLL (11q23) Breakapart DC
17-003	primeFISH® TP53 (17p13) LS DC
17-004	primeFISH® p16 (9p21) LS DC
17-005	primeFISH® MYB (6q23) LS DC
17-009	primeFISH® AFF1-MLL t(4;11) DF DC
17-010	primeFISH® ATM (11q22) LS DC
17-011	primeFISH® IGH-MAF t(14;16) DF DC
17-013	primeFISH® TCF3(E2A)-PBX1 t(1;19) DF DC
17-017	primeFISH® RB1 (13q14) LS DC

17-021	primeFISH® MALT1 (16q21) Breakapart DC
17-032	primeFISH® AML1-ETO t(8;21) DF DC
17-033	primeFISH® TEL-AML1 t(12;21) DF DC
17-040	primeFISH® BCR-ABL t(9;22) DF DC
17-041	primeFISH® BCR-ABL-ASS1 t(9;22) DF TC
17-042	primeFISH® ABL1 Breakapart DC
17-043	primeFISH® PML-RARA t(15;17) DF DC
17-044	primeFISH® RARA (17q21) Breakapart DC
17-048	primeFISH® IGH-MALT1 t(14;18) DF DC
17-049	primeFISH® CBFB-MYH11 t(16;16); inv(16) DF DC
17-050	primeFISH® CBFB t(16;16); inv(16) Breakapart DC
17-051	primeFISH® del(7q22.1) LS DC
17-052	primeFISH® ATM / TP53 / Sent 17 LS TC
17-054	primeFISH® del(7q31.2) LS DC
17-056	primeFISH® IGH-BCL2 t(14;18) DF DC
17-059	primeFISH® 20q12-13 LS DC
17-059-A	primeFISH® del 20q-(20q12; 20q13) / 20qter LS TC
17-059-B	primeFISH® del 20q12 / 20qter LS DC
17-060	primeFISH® del (13q14) / TP53 (17p13) LS DC
17-061	primeFISH® CKS1B (1q21) / 1p36 LS DC
17-062	primeFISH® MLL (11q23) / del (13q14) LS DC
17-064	primeFISH® ATM / TP53 LS DC
17-065	primeFISH® BCL6 (3q27) Breakapart DC
17-066	primeFISH® cMYC (8q24) Breakapart DC
17-068	primeFISH® EGR1 del(5q31.2) LS DC
17-069	primeFISH® IGH-FGFR3 t(4;14) DF DC
17-071	primeFISH® MYH11 t(16;16); inv(16) Breakapart DC
17-072	primeFISH® IGL (20q11) Breakapart DC
17-073	primeFISH® IGH (14q32) Breakapart DC
17-074	primeFISH® IGH-cMYC t(8;14) DF DC
17-075	primeFISH® CSF1R 5q33-34 LS DC
17-077	primeFISH® IGH-CCND1 t(11;14) DF DC
17-078	primeFISH® HMGB1 (13q12) LS DC
17-085	primeFISH® EWSR1 (22q12) Breakapart DC
17-086	primeFISH® IGH-MAFB t(14;20) DF DC
17-087	primeFISH® p18 (CKS1B/CDKN2c) LS DC
17-091	primeFISH® EVI1 (3q26.2) Breakapart TC
17-092	primeFISH® FIP1L1/CHIC2/PDGFRα (4q12) LS DC

4. Diagnosis and Clinical Research

- Cytogenetics (Fluorescence in situ hybridization (FISH))
- Prime FISH – Hematologic Cancer Panel

17-093	primeFISH® IGH-MYEOV t(11;14) DF DC
17-133	primeFISH® MLL-MLLT3 t(9;11) DF DC
17-134	primeFISH® MLL-MLLT4 t(6;11) DF DC
17-135	primeFISH® AML1 (RUNX1) Breakapart DC
17-136	primeFISH® BCL2 (16q21-22) Breakapart DC
17-137	primeFISH® CCND1 (11q13) Breakapart DC
17-141	primeFISH® IGH (2p11) Breakapart DC
17-142	primeFISH® PDGFRB (5q32) Breakapart DC
17-148	primeFISH® TCF3 (E2A) (18p13) Breakapart DC
17-148	primeFISH® TCF3 (E2A) (19p13) Breakapart DC
17-156	primeFISH® JAK2 (9p24) Breakapart DC
17-176	primeFISH® CLL Probe Set I (del(13q14) (D13S018) / cent 12 - TP53 / ATM - MYB - IGH)
17-179	primeFISH® CLL Probe Set II (del(13q14) (D13S018) / cent 12 - ATM / TP53 / cent 17)
17-180	primeFISH® MLLT4 (8q26.27) Breakapart DC
17-183	primeFISH® IGH-cMYC t(8;14) DF TC
17-186	primeFISH® TERT (5p15) Breakapart DC
17-186	primeFISH® del(5q31.2) / del(7q31.2) LS DC
17-186	primeFISH® IKZF3 (17q12) Breakapart DC
17-187	primeFISH® del 5q-(5q31; 5q33) / TERT (5p15) LS TC
17-197-A	primeFISH® del 5q-(5q31; 5q33) / 5p15 LS TC
17-198	primeFISH® del 7q-(7q22.1; 7q31.2) / Sent 7 LS TC
17-199	primeFISH® del 13q31.1 LS DC
17-203	primeFISH® TP53 (17p13) / NF-1 (17q11) / Sent 17 LS TC

Diagnosis and Clinical Research

- Cytogenetics (Fluorescence in situ hybridization (FISH))
- Prime FISH – Microdeletion Panel

1002-S1p36	primeFISH® 1p36 LS
17-018	primeFISH® Prader Willi/Angelman SNRPN LS DC
17-019	primeFISH® DiGeorge N25 22q LS DC
17-020	primeFISH® DiGeorge TBX1 22q LS DC
17-022	primeFISH® DiGeorge II 10p LS DC
17-023	primeFISH® Cri-Du Chat 5p LS DC
17-024	primeFISH® SHOX Xp LS TC
17-025	primeFISH® Williams Beuren 7q LS DC
17-026	primeFISH® Smith Magenis (RAI1) / Miller Dieker (17p) LS DC
17-027	primeFISH® Miller Dieker 17p LS DC
17-028	primeFISH® Wolf Hirschhorn 4p LS DC
17-029	primeFISH® SOTOS LS DC
17-030	primeFISH® Kallmann / STS LS DC
17-031	primeFISH® Alagille (Jag1) LS DC
17-045	primeFISH® SRY LS DC
17-045-A	primeFISH® SRY LS TC
17-046	primeFISH® XIST (Xq13.2) LS DC
17-047	primeFISH® Angelman (UBE3A) (D15S10) LS DC
17-067	primeFISH® DiGeorge VCFS/TUPLE1 LS DC
17-067	primeFISH® Cri-Du Chat / SOTOS LS DC
17-070	primeFISH® Langer Giedion LS TC
17-149	primeFISH® CHARGE (8q12) LS DC
17-151	primeFISH® Rubinstein-Taybi (16p13) LS DC
17-154	primeFISH® Saethre-Chotzen (7p21) / Williams Beuren (7q11) LS DC
17-182	primeFISH® Smith Magenis (FLI1) / Miller Dieker (17p) LS DC
17-200	primeFISH® Cri-Du Chat 5p / EGR1 del(5q31.2) LS DC
17-201	primeFISH® Williams Beuren / del(7q31.2) LS DC
17-202	primeFISH® Angelman (UBE3A) / PML / Sent 15 LS TC

Diagnosis and Clinical Research

- Cytogenetics (Fluorescence in situ hybridization (FISH))
- Prime FISH – Prenatal Panel

1002-SYq12	primeFISH® Yq12 LS
17-007	primeFISH® 13q14.2 LS
17-008	primeFISH® 21q22.13 LS
17-037	primeFISH® Chr. X/Y/18 TC
17-038	primeFISH® Chr. 13/18/21 TC
17-039	primeFISH® Chr. X/Yq12 DC
17-056	primeFISH® 13/21 LS DC
17-079	primeFISH® AneuFISH Prenatal I 13/21 (green/red) ve X/Y/18 (green/red/aqua)

17-012	primeFISH® 17q12 (Her2/Neu) LS DC
17-014	primeFISH® ROS1 (6q22) Breakapart DC
17-015	primeFISH® EGFR (7p11) LS DC
17-016	primeFISH® cMET (7q31) LS DC
17-053	primeFISH® ALK (2p23) Breakapart DC
17-063	primeFISH® 17q12 (Her2/Neu) / TOP2A LS TC
17-076	primeFISH® Syt (SS18) (18q11.2) Breakapart DC
17-089	primeFISH® N-MYC (2p24) LC DC
17-090	primeFISH® RET (10q11) Breakapart DC
17-140	primeFISH® MDM2 (12q15) LS DC
17-150	primeFISH® NF-1 (Neurofibromatosis) (17q11) LS DC
17-152	primeFISH® TFE3 (Xp11) Breakapart DC
17-153	primeFISH® TFF3 (21q22.3) Breakapart DC
17-158	primeFISH® TERC (3q26) LS DC
17-159	primeFISH® EML4 (2p21) Breakapart DC
17-160	primeFISH® EWSR1-ERG t(21;22) DF DC
17-165	primeFISH® FGFR1 (8p11) Breakapart TC
17-168	primeFISH® PAX3 (2p36.1) Breakapart DC
17-169	primeFISH® PAX7 (1p36.13) Breakapart DC
17-170	primeFISH® SRD (1p36.31) LS DC
17-172	primeFISH® CHOP (DDIT3) (12q13) Breakapart DC
17-174	primeFISH® TOP2A (17q21) LS DC
17-175	primeFISH® ZNF217 (20q13) LS DC
17-184	primeFISH® PTEN (10q23) LS DC
17-187	primeFISH® PIK3CA (3q26.3) LS DC
17-188	primeFISH® KRAS (12p12.1) LS DC
17-190	primeFISH® PD-L1 (CD274) (9p24.1) LS DC
17-191	primeFISH® WT1 (11p13) Breakapart DC
17-192	primeFISH® RREB1 / MYB / Sent 6 LS TC
17-193	primeFISH® ERCC1 (19q13) LS DC
17-194	primeFISH® AR (Xq12) LS DC



Diagnosis and Clinical Research

- Cytogenetics (Fluorescence in situ hybridization (FISH))
- Prime FISH – Solid Tumor Kits

1002-C1/5/19	primeFISH® Chr 1/5/19 Centromere
1002-C2	primeFISH® Chr 2 Centromere
1002-C3	primeFISH® Chr 3 Centromere
1002-C4	primeFISH® Chr 4 Centromere
1002-C6	primeFISH® Chr 6 Centromere
1002-C7	primeFISH® Chr 7 Centromere
1002-C8	primeFISH® Chr 8 Centromere
1002-C9	primeFISH® Chr 9 Centromere
1002-C10	primeFISH® Chr 10 Centromere
1002-C11	primeFISH® Chr 11 Centromere
1002-C12	primeFISH® Chr 12 Centromere
1002-C13/21	primeFISH® Chr 13/21 Centromere
1002-C14/22	primeFISH® Chr 14/22 Centromere
1002-C15	primeFISH® Chr 15 Centromere
1002-C16	primeFISH® Chr 16 Centromere
1002-C17	primeFISH® Chr 17 Centromere
1002-C18	primeFISH® Chr 18 Centromere
1002-C20	primeFISH® Chr 20 Centromere
1002-CX	primeFISH® Chr X Centromere
1002-CY	primeFISH® Chr Y Centromere
1002-CS	primeFISH® All Centromere
1002-S1q12	primeFISH® 1q12 Pericentromere
1002-S9q12	primeFISH® 9q12 Pericentromere

Diagnosis and Clinical Research

- Cytogenetics (Fluorescence in situ hybridization (FISH))
- Prime FISH –Centromere ve Pericentromere Kits

Diagnosis and Clinical Research

- Cytogenetics (Fluorescence in situ hybridization (FISH))
- Prime FISH – Telomer ve Subtelomer FISH Kits

1003-ST1	primeFISH® 1p/1q Subtelomeric DC
1003-ST2	primeFISH® 2p/2q Subtelomeric DC
1003-ST3	primeFISH® 3p/3q Subtelomeric DC
1003-ST4	primeFISH® 4p/4q Subtelomeric DC
1003-ST5	primeFISH® 5p/5q Subtelomeric DC
1003-ST6	primeFISH® 6p/6q Subtelomeric DC
1003-ST7	primeFISH® 7p/7q Subtelomeric DC
1003-ST8	primeFISH® 8p/8q Subtelomeric DC
1003-ST9	primeFISH® 9p/9q Subtelomeric DC
1003-ST10	primeFISH® 10p/10q Subtelomeric DC
1003-ST11	primeFISH® 11p/11q Subtelomeric DC
1003-ST12	primeFISH® 12p/12q Subtelomeric DC
1003-ST13	primeFISH® 13p/13q Subtelomeric DC
1003-ST14	primeFISH® 14p/14q Subtelomeric DC
1003-ST15	primeFISH® 15p/15q Subtelomeric DC
1003-ST16	primeFISH® 16p/16q Subtelomeric DC
1003-ST17	primeFISH® 17p/17q Subtelomeric DC
1003-ST18	primeFISH® 18p/18q Subtelomeric DC
1003-ST19	primeFISH® 19p/19q Subtelomeric DC
1003-ST20	primeFISH® 20p/20q Subtelomeric DC
1003-ST21	primeFISH® 21p/21q Subtelomeric DC
1003-ST22	primeFISH® 22p/22q Subtelomeric DC
1003-ST-X/Y	primeFISH® XYp/XYq Subtelomeric DC

ÜRÜN VE HİZMETLERİMİZ

Place of Use

- Private genetic testing centers
- Medical genetics, medical pathology, and hematology departments in hospitals and medical universities
- Departments of biology, pharmacy, veterinary medicine, dentistry, biotechnology, and agriculture in universities.

5. Diagnosis and Clinical Research**• DNA and RNA Extraction Kits****DNA**

- Whole Blood DNA Kit
- Tissue DNA Kit
- Plant DNA Kit
- FFPE DNA Kit
- Sputum/Saliva DNA Kit
- Urine DNA Kit
- Stool DNA Kit
- Bacterial DNA Kit
- Plasmid DNA Kit
- DNA Purification Kit
- Gel DNA Purification Kit

RNA

- Fast RNA Kit
- Fast RNA Kit Spin Column
- Total RNA Kit
- Viral RNA Kit
- miRNA Kit
- Plant RNA Kit
- FFPE RNA Kit
- Sputum/Saliva RNA Kit
- RNA Purification Kit

DNA/RNA

- Viral DNA/RNA Kit

Research and Development

ÜRÜN VE HİZMETLERİMİZ

Place of Use

- Medical genetics, medical pathology, and hematology departments in hospitals.
- Medical genetics, medical pathology, medical biology, and basic medical sciences departments in medical universities.
- Biology, pharmacy, nutrition and dietetics, sports sciences, veterinary medicine, dentistry, biotechnology, and agriculture departments in universities.

2. Research and Development

- Molecular Biology
- Primer Probe Design – Synthesis
- ✓ miRNA Stem Loop
- ✓ SNP (single nucleotide polymorphism)
- ✓ KASP PCR (competitive allele-specific PCR)
- ✓ Methylation (Methylation-Specific PCR (MSP))
- ✓ Methylation (Bisulfite-Sequencing PCR (BSP))
- Genetic/Epigenetic Project Design
- Molecular/Cell Culture Studies

ÜRÜN VE HİZMETLERİMİZ

2. Research and Development

- Molecular Biology
 - DNA/RNA One Step /Two Step Real Time PCR Mastermix
 - cDNA Synthesis Kit
 - HRM PCR Mastermix
 - Bisulfite Conversion Kits
 - Project Writing and Consulting Services
 - Bioinformatics Analyses
 - Protein Synthesis
 - Plasmid Design / Synthesis
 - Laboratory Setup / Technical Training



info@cellin.com.tr



+90 539 8324595

